

MSE

Retaining Wall Systems

Precast Panel Walls • Wire Walls



Introducing the Grid-Strip™ Soil Reinforcement System

- ▶ Simplifies installations
- ▶ Saves time and money

ail.ca

 **BEST
MANAGED
COMPANIES**



Atlantic Industries Limited
We Support You.

Save time. Save money. Specify a fast, economical MSE Retaining Wall System for your next engineered embankment project. These **historically-proven**, cost-effective systems are **easy to install** using local equipment and crews. They adapt well to curves, angles and steps and can reach heights of over 30 m (100'). Able to handle the most **extreme surcharge loads**, their core strength is in their heavy-duty, interlocking soil reinforcement mats made from high-quality, **welded, galvanized steel**. From natural rock or vegetated faces, to custom precast panel designs, MSE Wall Systems are available with **many types of finish options**.



Precast Panel Walls



Wire Walls



Temporary Wire Walls

Look into MSE Retaining Wall System from AIL and see how well **quality and value** are stacked in your favour.

MSE

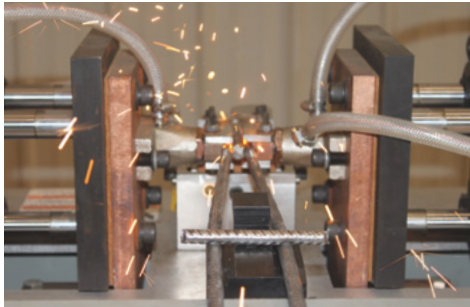
Retaining Wall Systems

The Grid-Strip™ Soil Reinforcement System is revolutionizing MSE wall design.

RECOMMENDED FOR

- ▶ Retaining Walls ▶ Headwalls and Wingwalls ▶ Bridge Abutments
- ▶ Grade Separations ▶ Crusher Ramps / Walls

With the superior pull-out capacity of heavy duty wire mesh, The Grid-Strip™ System is superior to other strip style systems.



Our patent-pending welding process is predictable, verifiable and efficient.

AIL's Grid-Strip™ System represents the most significant improvement to the design and construction efficiency of MSE walls in decades. With its standardized width and wire size W11 (9.5mm/.375"), the Grid-Strip™ System makes our MSE Precast Panel Wall Systems easier to design, inventory and construct – saving valuable time and money on projects.

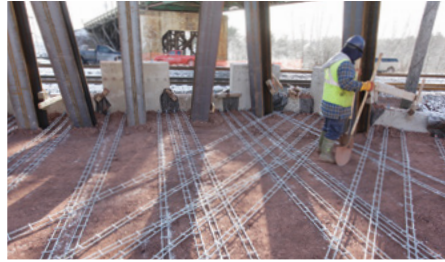
Not satisfied with merely designing such an improvement, AIL has also developed a state-of-the-art manufacturing facility with specialized equipment designed exclusively for this unique and revolutionary product – ensuring that the quality, efficiency and capacity to serve your needs are in place.

- ▶ Simplified and standardized soil reinforcing strip
- ▶ Saves time and money on labour and material
- ▶ Versatile system easily accommodates obstructions and unique design or geometric constraints
- ▶ The ultimate soil reinforcement for all applications
- ▶ Made from durable galvanized steel
- ▶ Fewer components simplifies onsite quality control



Versatility defined.

The Grid-Strip™ System offers total flexibility on wall design and construction. Grid-Strips are easy to ship and store on the job site. Pilings and other obstacles are easily accommodated as the Precast Panels can be ordered with additional anchors and the Grid-Strips can be skewed around them. Unique wall geometries and acute corners are no problem for the Grid-Strip™ System.



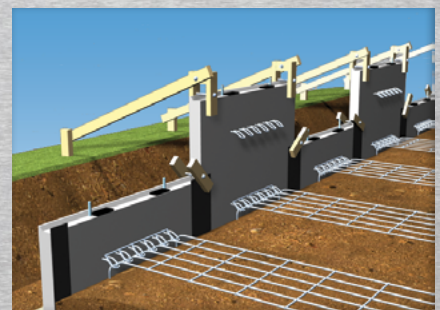
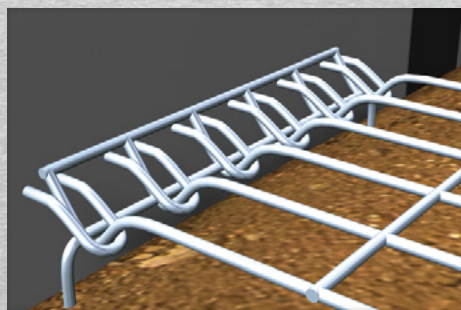
Optional Flip Pin Connector.

With its quick up-turn-and-down insertion, the Flip Pin Connector speeds up installations, saving time and money.



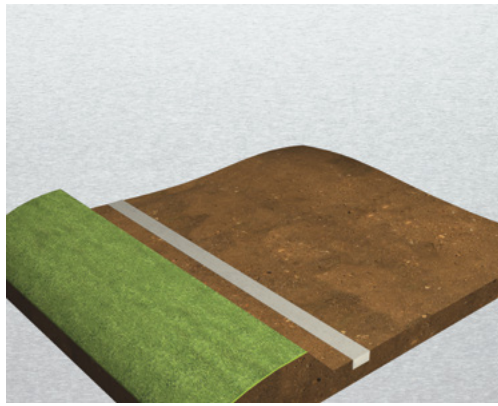
Wire Mesh Soil Reinforcement System also available.

Our Wire Mesh Soil Reinforcing System is superior to other comparable large mesh systems due to the specialized patented string-anchor connection system. With its standardized large widths and wire sizes, the Wire Mesh system makes all types of MSE Wall Systems easy to design, inventory and construct.

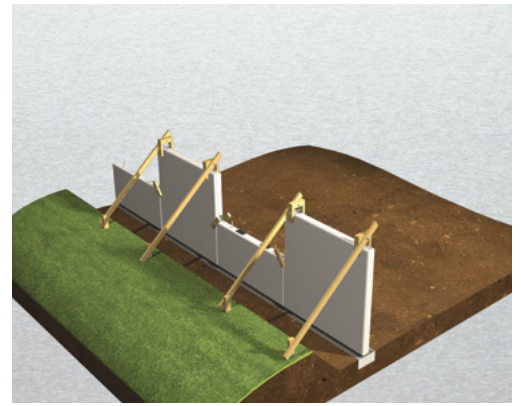


Precast Panel Walls

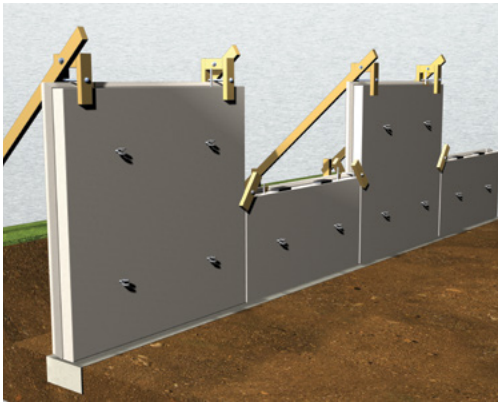
This system uses precast panels with soil reinforcement systems. A variety of panel finishes and colours are available to meet the structural and aesthetic demands of today's infrastructure projects.



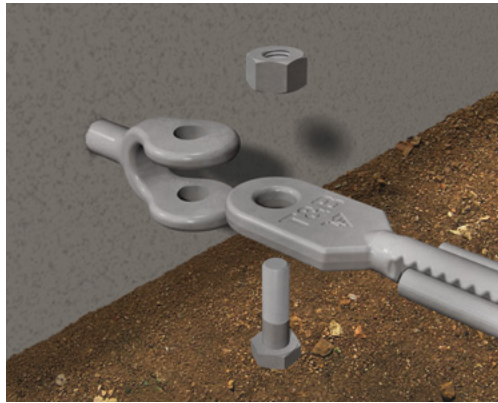
Leveling pad is installed on a compacted base.



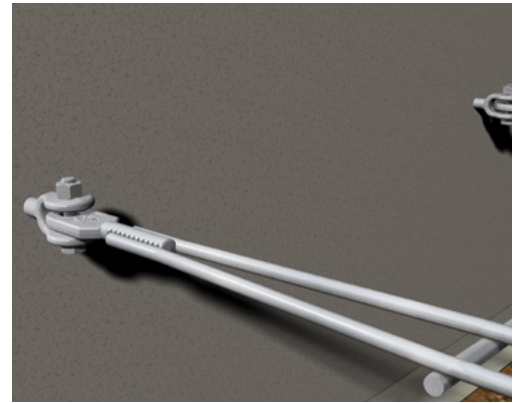
Precast panels, braces and clamps are set.



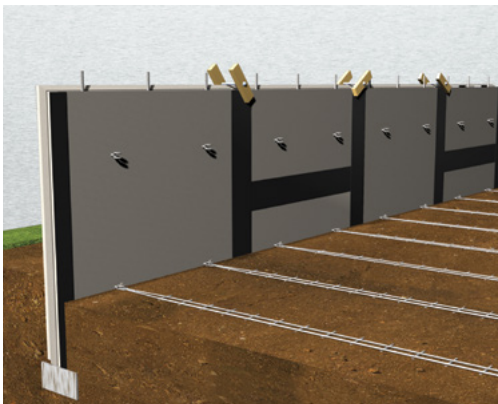
Grid-Strip tabs connect to anchors on panel backs.



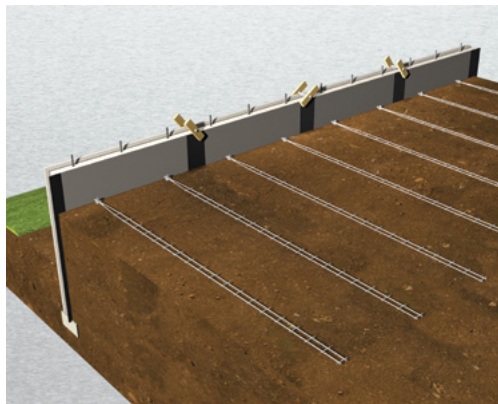
Nuts face up for easy installation/inspection.



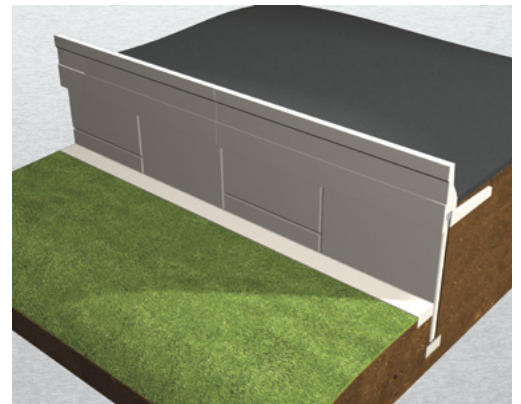
Finished connection allows for deflection and articulation.



Next lift added.



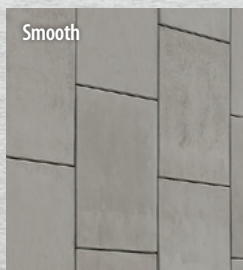
Panels, fill lifts and strips continue.



Coping, safety barriers and road surface added.

Precast Panel finish options.

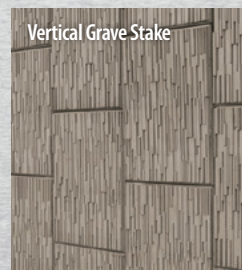
Today's precast concrete panels are pushing the boundaries in design and performance. Although many panel types are available, your AIL Technical Sales Representative can also work with your project team to customize colours, textures, shapes, sizes and performance options for all types of applications.



Smooth



Fractured Fin



Vertical Grave Stake



Ashlar Stone



Split Slate



Custom Colour



Custom Branded



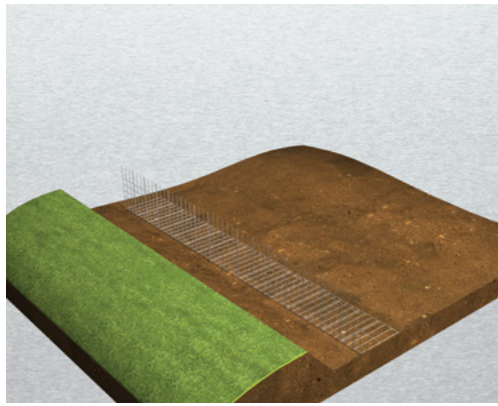
Custom Motif



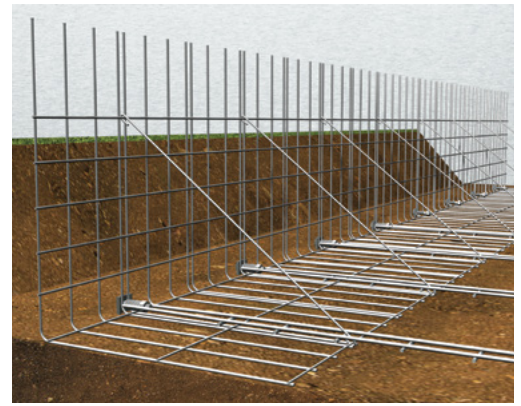
Custom Mural

Wire Walls

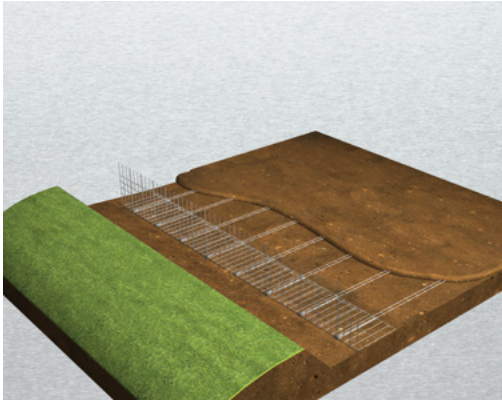
Wire Walls provide fast, flexible embankment protection for both temporary and permanent applications. Wire Walls easily accommodate curves, angles or steps, culverts, bridge piles or other site requirements. Ideal for staged construction of structural plate.



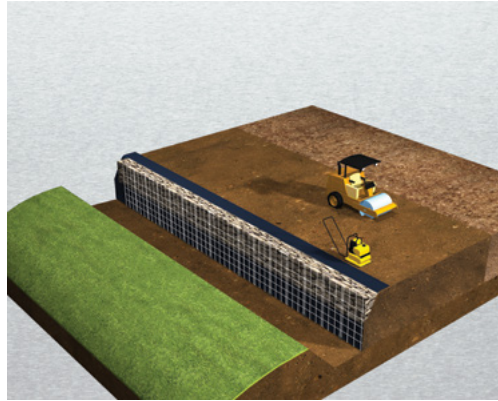
Starter wire face is installed on a compacted base.



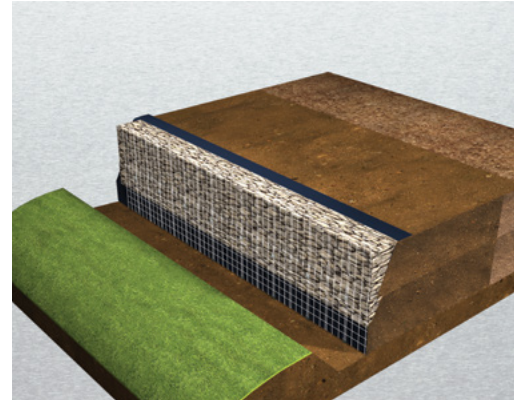
Track-Strip™ Soil Reinforcement System added.



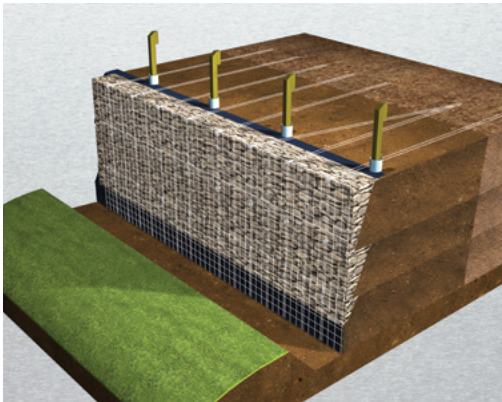
Backfill added over first course of reinforcement.



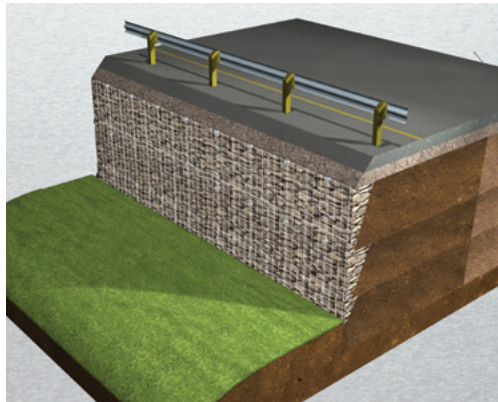
First fill lift with fabric and select stone above grade.



Repeat previous steps for additional lifts.



Track-Strip™ System can skew around obstructions.



Then safety barrier and road surface added.

Wire Walls are quick and easy to erect for both permanent and temporary applications.

Wire Wall finish options

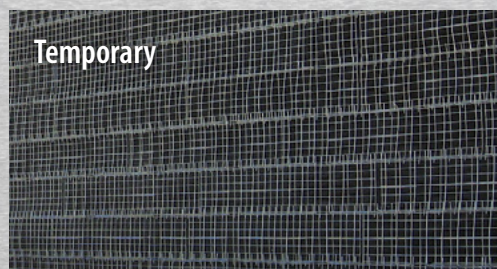
Wire Walls can be left 'natural', with exposed wire and select rock face or they can be designed to accept a variety of finishes, such as grass, vegetation and shotcrete. Temporary Wire Walls with black steel and filter fabric at the face are also available.



Natural Stone



Shotcrete



Temporary



Vegetated

MSE Retaining Wall Systems provide fast, flexible embankment protection for a wide variety of infrastructure applications.

Ideal for:

- ▶ Bridge abutments, crusher walls, grade separations, headwalls, steepened slopes
- ▶ Highway, commercial, mining and industrial applications
- ▶ Both urban and rural settings
- ▶ Temporary or permanent applications up to 100+ years

Easily adapt to:

- ▶ Install with minimal site preparation and work area
- ▶ Complex sites and native soil conditions
- ▶ Curves, angles, steps, culverts, piles and other site anomalies
- ▶ Suit any type of application with a variety of finishes

Strong enough to:

- ▶ Reach heights of over 30 m (100')
- ▶ Support substantial static and dynamic loads
- ▶ Resist seismic activity shock
- ▶ Stabilize unpredictable landscapes
- ▶ Deliver extended design service life expectancies

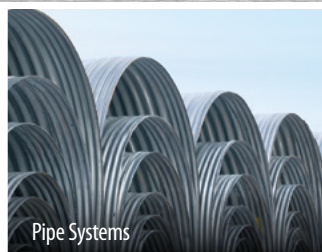
The information and suggested applications in this brochure are accurate and correct to the best of our knowledge and are intended for general information purposes only. These general guidelines are not intended to be relied upon as final specifications and we do not guarantee specific results for any particular purpose. We strongly recommend consultation with an Atlantic Industries Limited Technical Sales Representative before making any design and purchasing decisions.



Structural Plate



Wall Systems



Pipe Systems



Prefabricated Bridges



Sound Barrier Walls

Save time. Save money. Choose efficient infrastructure solutions from AIL. Visit: ail.ca



Atlantic Industries Limited

Head Office:

PO Box 6161, 32 York St.
Sackville, New Brunswick
Canada E4L 1G6
Phone: (506) 364-4600

Locations across Canada:

St. John's, NL • Deer Lake, NL • Halifax, NS • Dorchester, NB
Louisville, QC • Mirabel, QC • Ottawa, ON • Toronto, ON • Ayr, ON
Kenora, ON • Winnipeg, MB • Saskatoon, SK • Calgary, AB • Edmonton, AB
Westlock, AB • Armstrong, BC • Prince George, BC • Vancouver, BC



Atlantic Industries Limited



INTERNATIONAL



SOUND WALLS



Atlantic Industries Limited is a member of
THE AIL GROUP OF COMPANIES